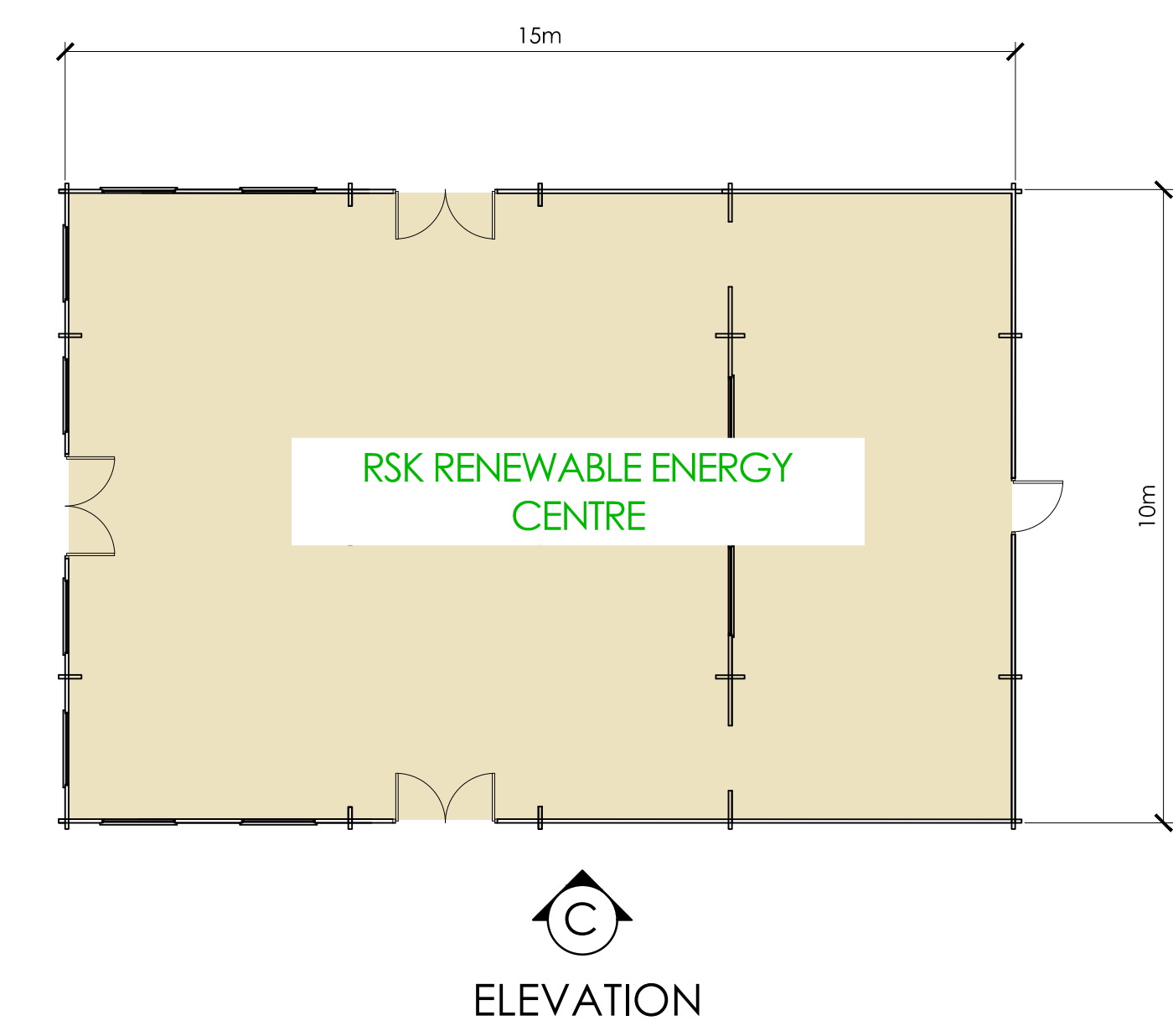


ELEVATION A



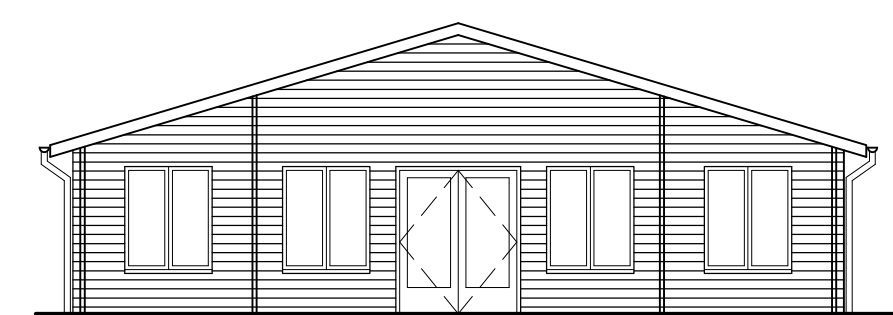
GROUND FLOOR PLAN



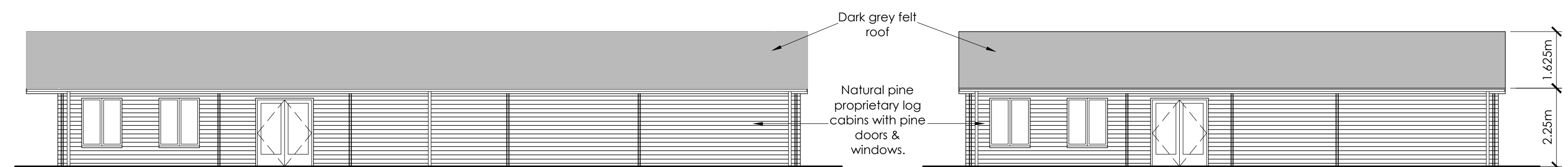
ELEVATION D

ELEVATION B

ELEVATION C

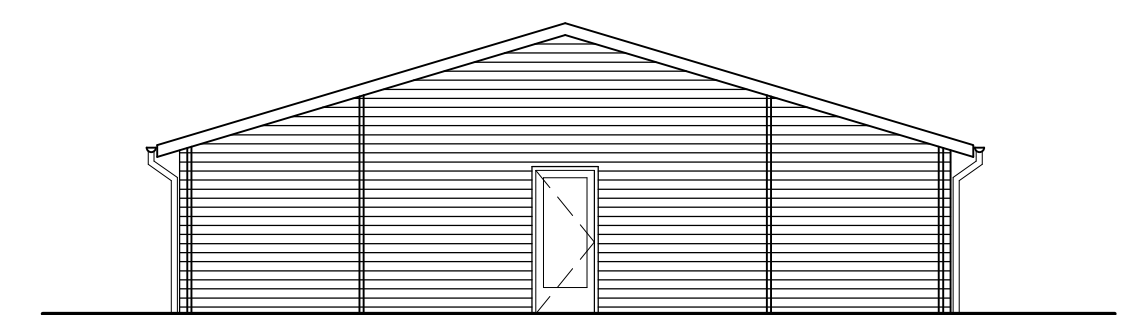


ELEVATION A



ELEVATION B

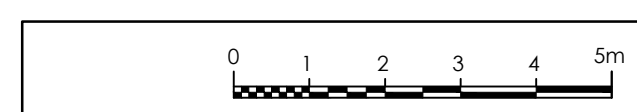
ELEVATION C



ELEVATION D



3D VIEW OF LOG CABINS



				Status PLANNING		Client <div>RSK</div> <div>Fives Court, The Crescent Abbots Langley, Herts WD5 0DR t: 01923 260555 e: info@kmgp.com</div> <div>KMG partnership</div> <div>engineering : architecture : infrastructure</div>	
				Project HATTERSLEY SCIENCE & TECHNOLOGY PARK			
				Drawing Title RSK Sustainability & Renewable Energy Centre			
Rev	By	Date	Details				
Scale 1:100 UNO		Drawn AE	Checked				
Sheet size A1		Date Nov 2018	Passed				
					Drawing No. 4 5 7 5 - 0 2 8	Rev.	